



**Pacific Assist**  
Inspiring Self-reliance

**Annual Report**  
**01 July 2018 – 30 June 2019**

Completed July 2019

## **Vision**

Inspiring Self-reliance

## **Mission**

Our mission is to inspire individuals, families, and communities to be emotionally, physically, economically, and educationally self-reliant.

## **Overview**

Pacific Assist is an Australian and New Zealand based not-for-profit charity serving the nations of the South Pacific. Our mission is to inspire individuals, families, and communities to be emotionally, physically, economically, and educationally self-reliant.

Originally founded as Furniture for Schools in New Zealand for the purpose of collecting redundant school furniture for schools in islands such as Tonga and Samoa, Pacific Assist has expanded its focus to include education, health and well-being, economic development, and humanitarian projects in Australia, New Zealand, and the islands of the Pacific.

Pacific Assist identifies needs within South Pacific communities and then brings together the expertise and resources to meet the need. An essential element of our effort is engaging the individuals, families, and communities receiving assistance in the process of determining and implementing solutions to identified needs. This approach is founded on the principle that if you feed a person a fish, you feed them for a day, but if you teach them how to fish you feed them for a lifetime. Fostering self-reliance is at the heart of our partnerships with South Pacific communities.

## **Contents**

<b>Board of Directors</b> .....	<b>1</b>
<b>Members</b> .....	<b>3</b>
<b>Organisational Structure</b> .....	<b>3</b>
Company Type.....	4
Leadership and Management .....	4
Charity Tax Concession Status.....	4
Deductible Gift Recipient (DGR) Status .....	4
<b>Charitable Purposes</b> .....	<b>5</b>
Overview of Projects That Fulfilled Charitable Purposes .....	5
<i>Goal 1 – Consolidate and Improve the Three Existing Projects</i> .....	5
Furniture for Schools .....	5
Vanuatu (Port Vila) Principal Development and Mentor Program .....	7
Still-useful Medical Surplus Project .....	10
<i>Goal 2 – Seek and Establish Partnerships with Australian Hospitals and Secure a Regular Source of Still-useful Medical Surplus</i> .....	10
<i>Goal 3 – Seek and Establish Additional Funding Partners..</i>	11
New Projects Added Since 2018 AGM .....	11
<i>Extra Mile Project Tongan HIPPY</i> .....	11
<i>Turbo Touch Diabetes Prevention Program</i> .....	12
<i>PNG Mum’s Pre-school</i> .....	14
<b>Financial Statements</b> .....	<b>16</b>
<b>2020 Strategic Plan and Goals</b> .....	<b>17</b>
<b>Acknowledgements</b> .....	<b>19</b>
<b>Appendix 1 – Grant Application Schedule</b> .....	<b>20</b>

## Board of Directors

### Richard McLean – Director / Chairperson

---



Richard commenced working in the Financial Services sector in 1988. He is a certified financial planner, and founder and owner of Frontier Financial Group. Richard's passion is assisting others to achieve their goals and enjoy a quality life. He is married to Janelle, and they have five children. He is an avid follower of rugby, and enjoys running in his leisure time.

### Riki Tukukino – Director / Deputy Chairperson

---



Riki is a Management Studies graduate, and has held various management positions with Mobil Oil Australia and FH Faulding. He is currently director of two companies operating in the pharmaceutical and food industries. Riki sees Pacific Assist as an opportunity to make a real difference in people's lives. Riki is married to Donna and they have three children. He loves rugby, and is an avid All Blacks supporter.

### John McLean - Director

---



John has enjoyed the benefits of a sound education and formal qualifications. Together with his wife Gaynor, he has raised three sons. It was while these young men were at school that education became a central focus in their household, culminating years later in a Government appointment to New Zealand's very first Senior High School located in Albany, Auckland. He has enjoyed a long history of elected local

Government participation, including being appointed Chairman of numerous local organisations. He is presently a Hearings Commissioner with Auckland Council. In addition to his roles in local government, John runs his own Financial Planning practice in Auckland.

### **Callum Blair - Director**

---



A former Senior Police Officer, and recipient of two prestigious policing commendations, Callum has been Owner and Director of Campus Security NZ Limited since 1998. He is a highly experienced security specialist, Relationship Manager, Contractors Representative, and Contract Manager with high-level skills in the implementation, training, and management of major security services contracts. Enhancing his professional background is Callum's experience in local politics. He has served on various boards and committees, including five terms as a City Councilor and chair of the Regulatory Committee for six years. Callum is married to Irene, and they have 3 daughters and 3 sons.

### **Clive Haydon – Secretary / Projects Manager**

---



Clive has worked in a variety of roles managing outdoor education and other personal development programs for a variety of organisations, including charities supporting at-risk youth. He holds a Bachelor of Arts (Outdoor Education) and a Master of Science (Youth and Family Recreation). Assisting others to reach their highest potential has been his professional focus for over 25 years. Clive is married to Shari. They have four sons. He loves the outdoors, bushwalking, and canyoneering.

## **Members**

Callum Blair

Robert Gordon

John Mclean

Richard McLean

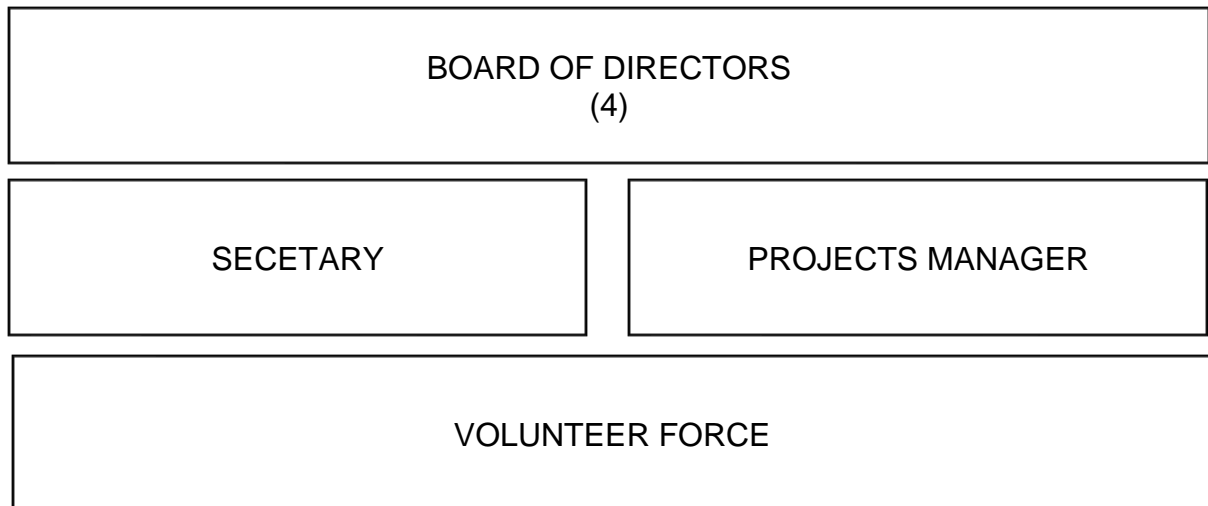
Riki Tukukino

## Organisational Structure

### Company Type

Australian Public Company (Registered Charity Limited by Guarantee)

### Leadership & Management



### Charity Tax Concession Status

Public Benevolent Institution endorsed to access the following tax concessions:

- GST Concession
- Income Tax Exemption
- FBT Exemption

### Deductible Gift Recipient (DGR) Status

Endorsed as a Deductible Gift Recipient (DGR) from 06 Jun 2018

## Charitable Purposes

The company's object is to pursue the following charitable purpose(s):

Assist disadvantage individuals, families, and communities in Australia, New Zealand, the islands of the South Pacific, and other nations in need to become emotionally, physically, economically, and educationally self-reliant by building partnerships and mobilizing expertise and resources that:

- Foster educational development
- Promote health & well-being
- Provide humanitarian aid
- Promote economic development

In seeking to fulfil these charitable purposes, Pacific Assist engages with governments, communities, and families. Pacific Assist believes the organisation is most effective when working in trusted partnerships to achieve common objectives. In addition, we believe results are improved when people freely give of their means, time, and talents with no other motivation than to bless the lives of others.

## Overview of Projects That Fulfilled Charitable Purposes

During the period July 2018 to June 2019, Pacific Assist sought to implement the strategy laid out in the 2018 Annual General Meeting. This strategy was to:

Continue to implement the three established projects (Furniture for Schools, Vanuatu (Port Vila) Principal Development and Mentor Program, and the Still-useful Medical Surplus Project). In addition, the following strategic goals were identified:

1. Consolidate and improve the three existing projects
2. Seek and establish partnerships with Australian hospitals and secure a regular source of still-useful medical surplus
3. Seek and establish additional funding partners

### *Goal 1 – Consolidate and Improve the Three Existing Projects*

Furniture for Schools: In the South Pacific islands large numbers of students are sitting on the floor or have very poor-quality desks and chairs. Through the Furniture for Schools Project, Pacific Assist and LDS Charities are assisting to alleviate this problem. In so doing, they are enhancing the learning environment, and this increases educational outcomes and students' self-reliance.



In both Australia and New Zealand, the Furniture for Schools Project has continued to thrive. Schools in both countries continue to seek out the opportunity to donate in-good-condition desks and chairs. Donations were sourced through:

- The Pacific Assist website donation form
- Referrals from new furniture suppliers
- Referrals from other schools
- Referrals from Campus Security
- Referrals from Frontier Financial Group's principal conferences

In addition to donating desks and chairs, many schools also donate in good condition library books. Further, a school in Melbourne donated \$5,000, and their Student Representative Council raised an additional \$1,195 to towards the cost of shipping their donated furniture to PNG.

From July 2018 to June 2019 Furniture for Schools shipped a total of 43 containers to the South Pacific, broken down as follows:

- Total containers: 43
- Total containers shipped from New Zealand: 21
- Total containers shipped from Australia: 22
- Approximately 4,000 double desks, 8,000 chairs, and hundreds of books
- Countries that received furniture: Fiji, Kiribati, Papua New Guinea, Samoa, Tonga, and Vanuatu

Although the overall results for the Furniture for Schools project have been very successful, there have been several challenges.

First, despite the enormous need and desire for the furniture among the islands, and the large supply of donated furniture being offered, due to funding restrictions Pacific Assist is limited in how much furniture it can send.

Second, the "pull" philosophy of LDS Charities creates an inconsistent and unpredictable collection and shipping schedule. At this stage this challenge has not been solved, but one solution would be to seek additional funding sources outside of LDS Charities. That would allow Pacific Assist to have greater control over the schedule. Another possible solution is working with LDS Charities to develop a more consistent schedule for projects. For example, Port Moresby in March, Lae in June, Solomon Islands in September, and Port Vila in December.

Third, is the time and cost inefficiency for Pacific Assist to collect small donations and bring them to a central location for loading into a container. In response to this challenge, schools in Australia are now being asked to donate a minimum of a

container load of desks and chairs. If they don't have this amount, they are encouraged to partner with other schools in their area to get enough numbers. They are also being asked to locate a container site and be responsible for getting the furniture to the container site ready for packing. As such, Pacific Assist is relieved of much of the pre-packing preparation cost and time burden. To date, schools have responded positively to these protocols.

Fourth, once containers arrive in the recipient country, processing through the wharf and distribution to the schools continues to be a challenge in Papua New Guinea, Vanuatu, and Tonga. This is a situation that required ongoing monitoring and evaluation. In all cases, on the ground, face-to-face negotiation proved to be the most successful strategy for resolving the problems. This was supported by assistance from LDS humanitarian missionaries or country managers. However, the effectiveness of LDS Charities representatives varied based on individual capacity. In Australia, Pacific Assist is working closing with local shipping agents to ensure the process in the receiving country's wharf are improved and costs and delays reduced.

Despite these challenges, Pacific Assist is fully committed to the Furniture for Schools Project, and it continues to deliver a tremendously valuable resource to schools in the South Pacific.

Vanuatu (Port Vila) Principal Development and Mentor Program: The Vanuatu (Port Vila) Principal Mentor and Development Program (VPDMP) pilot was an initiative of the Vanuatu Ministry of Education and Training (MOET), LDS Charities, and Pacific Assist conducted between April 30 and October 17, 2018 by Huddle Learning Systems. Its objective was to build educational self-reliance by assisting principals' build their capacity to lead teaching and learning in their schools, and thus improve learning outcomes for students. The program consisted of:

- One-to-one distance and face-to-face mentoring by Australian high performing principals
- Live online professional development workshops focused on leading teaching and learning
- A face-to-face professional development workshop in Port Vila
- Providing mentee principals access to online professional development resources

The program was deemed to be a successful first step in a long-term process of strengthening principal capacity in Vanuatu. The evidence from the post program evaluation suggested the program was successful in establishing the formative relationships necessary to continue to the next phase of the program.

In addition to the development of the formative relationships, mentees gained access to the latest theory of school improvement and exposure to international best practise models of teaching. This was accessed through workshops and mentoring, and was also made available in soft copy format for ongoing access and review. Further, much of the soft copy material included additional references to online content that can be freely accessed through a computer with internet connection.

Although the experience became significantly stronger following the mentors' visit to Port Vila towards the end of the program, the tyranny of distance and not being able to have mentors face-to-face on the ground in Port Vila on a regular basis was a significant challenge. Nearly all other challenges were influenced by this factor. The limited timeframe and a lack of understanding of the cultural context and workplace challenges faced by mentees were also significant challenges. Despite the challenges, all partners believe the program was a successful first step and are committed to continuing the program into the future.

Based on the program evaluation, the following recommendations were made:

- Involve the Victorian Department of Education and Training and other Peak Bodies as project partners in 2019 and beyond
- Seek additional funding partners such as:
  - UNESCO
  - DEFAT
  - World Bank
  - Corporates
  - Philanthropists
- Establish a Cultural Board of Advice

In response to the last recommendation, a Cultural Board of Advice was established in May of 2019. The voluntary members of the board are:

- Matthew Glen (education consultant, academic and former principal who has spent time in Vanuatu assessing the education sector)
- Alex Hetyey (current principal of Central School, Port Vila with 40 years teaching experience in the Middle East, Africa, and the Islands of the South Pacific)
- Astrid Kersten (academic and Executive Director of a Port Vila based NGO that delivers training and development programs including principal mentoring)
- John O'Connell (retired educator and former principal of Central School, Port Vila with extensive teaching experience in Vanuatu)

- Jonathan Yonah (Shefa Province Provincial Education Officer who is responsible for the training and development of all principals in Port Vila and who reports directly to the Director of Education in the Vanuatu Ministry of Education and Training)
- Stephen Zagala (World Cultures Research Fellow at the South Australian Museum responsible for the Pacific Cultures Gallery who has been conducting anthropological research in Vanuatu since 1999)

The inaugural board of advice meeting was held on May 31, 2019. Board members reviewed the pilot program evaluation and the draft proposal for phase two of the program. Their recommendations are currently being implemented into the ongoing development of phase two.

Another important insight that came from the pilot program was that many principals in Vanuatu lack formal qualifications, with some having no more than high school graduation. To be employed as a principal, the MOET require candidates to have a Certificate/Diploma of School Leadership. As such, many Vanuatu principals are acting principals. This creates a dilemma where the current school leaders are under qualified and under paid, but they can't afford to get the training they need to qualify to be promoted. This has significant negative implications for the quality of education in Vanuatu.

In response to this, and as part of the development of phase two of the program, Pacific Assist and the MOET have been discussing the following three-pronged principal development model:

- VPDMP prepares principals to meet the prerequisites for the Diploma of School Leadership:
  - Language proficiency (English/French and Bislama)
  - English for Academic Purposes (prerequisite for admission into undergraduate programs)
  - Principal performance standards annual goals (mentors work with principals in their efforts to meet the performance standards set by the MOET)
- Establishment of a Perpetual Education Fund to provide the financial means for principals to complete the Diploma of School Leadership
- PA and partners facilitate access to third party Certificate/Diploma of School Leadership providers (BYU, Huddle Learning Systems, Victorian Principals Association)

Phase two of the program has received endorsement from MOET by both the Director of Education, Samuel Katipa, and the Director of the School management Unit, Marcel Yamsiu. It is expected that phase two of the program will commence in January of 2020 and conclude in December of 2021.

#### Still-useful Medical Surplus Project:

In response to an appeal from both LDS Charities and several hospitals for beds and equipment, Pacific Assist implemented the Still Useful Medical Surplus project in May of 2018. The aim of the project is to build self-reliance through improving health outcomes for patients. During the period July 2018 to June 2019 one shipment of 15 electric hospital beds and eight bed poles was sent from Castlemaine Health to the Port Moresby General Hospital in Papua New Guinea.

Castlemaine Health has another 100 beds to donate as they become available during the second half of 2019.

#### *Goal 2 – Seek and Establish Partnerships with Australian Hospitals and Secure a Regular Source of Still-useful Medical Surplus*

The establishment of partnerships with Australian hospitals is ongoing, but the following has been accomplished during the July 2018 to June 2019 period:

- A relationship has been established with Andrew Bond, Group Director of Facilities at Epworth Health Care. Initial discussions led to the following outcomes:
  - Andrew expressed a desire to have Pacific Assist as a partner of choice
  - Epworth has still-useful medical surplus from time to time, but not large amounts
  - Epworth will donate the next load of still-useful medical surplus they have to Pacific Assist, and Andrew will use this as a test case.
- Robert Gordon met with Ash Robinson, President of Globus Relief, while on a trip to the United States. Globus Relief is based in the United States and seeks to improve the delivery of healthcare worldwide by gathering, processing and distributing surplus medical and health supplies to charities around the world. They have distributed over \$1 billion (fair market value) of medical equipment, instruments and supplies to people in need in over 150 countries and territories worldwide. Ash indicated he would be happy to partner with Pacific Assist. The development of the relationship is ongoing.

### *Goal 3 – Seek and Establish Additional Funding Partners*

During the period July 2018 to June 2019, several initiatives have been undertaken towards attaining the objective of establishing additional funding partners. The initiatives undertaken were:

- Inviting Robert and Rose Gordon of the Extra Mile Project to help drive philanthropy among organisations and wealthy individuals who have an interest in supporting disadvantaged communities in the Pacific, at home, and the broader international community. Robert and Rose accepted the invitation, and their efforts are ongoing
- Appointing Donna Afolayan to search out and apply for grants offered across government, business, and private philanthropy. This initiative has been funded by Frontier Financial Group and is ongoing (see Appendix 1 Grant Application Schedule for specific grants being sought).
- Currently establishing a relationship with Touch New Zealand that includes working in partnership to secure funding from government and business for the Turbo Touch Diabetes Prevention Program
- Approaches to individuals for financial support

### **New Projects Added Since 2018 AGM**

In addition to pursuing the strategic goals outlined at the 2018 AGM, Pacific Assist has undertaken three new projects during the last 12 months.

#### *Extra Mile Project*

In June of 2018, Pacific Assist began negotiations with Robert Gordon of the Extra Mile Foundation, a not-for-profit charity based in Queensland, to consider the value to both parties of Extra Mile Foundation projects becoming projects under the banner of Pacific Assist. The terms of this partnership were finalised in July, and the Pacific Assist Extra Mile Project was launched. Under the terms of the agreement all Extra Mile projects fall under the banner of Pacific Assist and are aligned with the four Pacific Assist quadrants of focus (Education, Health and Well-being, Humanitarian Aid, Economic Development). Within this framework, the Extra Mile group maintains a local identity by maintaining their name in the project name, and having a dedicated space on the Pacific Assist website.

The Extra Mile Tongan HIPPY project is the first Extra Mile project to be launched under the Pacific Assist banner. HIPPY is a home-based early literacy program. It consists of 60 Tongan families, comprising 60 children, and uses both full time (1) and part time (4) coordinators. It has a current funding commitment of two years. The program's key objectives are to:

- Improve self-reliance by assisting participants to have the confidence to participate effectively in school
- Successfully complete the two-year trial period
- Establish partnerships with the Tonga MOET and other education providers to expand the reach of the program

### *Turbo Touch Diabetes Prevention Program*

Over the past 12 months Pacific Assist has become increasingly aware of the very high levels of diabetes in South Pacific island nations. In response to this, and to the Eat Healthy Be Active diabetes prevention program developed by LDS Charities, Pacific Assist and Touch New Zealand began discussing the value of utilising Turbo Touch (a cross training, modified version of touch football) as a medium for diabetes prevention. It was proposed that facilitating opportunities for school students to play Turbo Touch would be an excellent way to build self-reliance through promoting healthy living and physical activity by:

- Providing a fun sports game suitable for all ages, sizes and level of ability
- Providing a practical and engaging medium and context for delivering diabetes prevention messages prior to, during, and after the game
- Engaging schools in the process of promoting, teaching, and playing the game with their student body

As Pacific Assist and LDS Charities had established positive relationships and goodwill with South Pacific island schools through the Furniture for Schools project, it seemed logical to build on this to introduce schools to Turbo Touch as a diabetes prevention medium.

Due to strong existing relationships with Tongan education and sporting representatives, Tonga was selected as the first country to receive an invitation to participate in the Pacific Assist Turbo Touch Diabetes Prevention Program. Initially, the Pacific Assist development team and LDS Charities representatives met with Tongan Deputy Prime Minister, Hon Semisi Sika, to discuss the possibility of utilising Turbo Touch programs as a means of early intervention to combat the onset of diabetes. A "Train the Trainer" program was among the proposals offered to schools that would like their Teachers or Support Staff to learn the rules of Turbo Touch. In

addition, an invitation was extended to Sports Council Members to join Pacific Assist in an inaugural game of Turbo Touch – Exercise to Beat Diabetes at Tonga High School. Following the positive response from Mr. Sika, Pacific Assist and Andy Morgan-Tafea (the licensee of Turbo Touch in Tonga) agreed to move forward as partners to establish the Pacific Assist Turbo Touch Diabetes Prevention Program. At that stage, LDS Charities decided not to engage as a partner.

On March 26, 2019, in conjunction with a Pacific Assist furniture hand-over ceremony, Pacific Assist, in partnership with Andy Morgan-Tafea, the Tongan Ministry of Education and Training, and the Tongan Netball Association introduced Turbo Touch – Exercise to Beat Diabetes to Tonga High School in Nuku'alofa, Tonga. Thirteen Tongan High School students participated in an exhibition game played in front of the entire student body and school faculty. Also playing with the students was Enoke Afeaki, former Captain of the Tonga Rugby team, former New Zealand Hurricanes player, and current Director of Operations for the Tongan Olympic team. The game was extremely well received by participants, students, staff and special guests. An important observation made during the launch was that a key to the ongoing success of Turbo Touch – Exercise to Beat Diabetes as a diabetes prevention program, will be the capacity of the program to effectively deliver diabetes prevention messages before, during, and after games.

In June, Pacific Assist Turbo Touch – Exercise to Beat Diabetes Ambassadors, Andy Morgan-Tafea and Nomi Tafea, returned to Tonga to:

- Ensure continuity of the program initially launched at Tonga High School
- Introduce the LDS Missionaries to the program with the intention of utilising them as Turbo Touch – Exercise to Beat Diabetes ambassadors and trainers
- Follow up on the commitment from the Ministry of Education and Training and the Ministry of Health to provide letters endorsing the program

The above goals were achieved. In addition, Andy and Nomi met with Enoke Afeaki, Director of Operations for the Tongan Olympic team and Turbo Touch – Exercise to Beat Diabetes ambassador in Tonga. In their discussions, Enoke proposed holding a mini Turbo Touch – Exercise to Beat Diabetes “World Cup” to be held at Teufaiva Stadium, Tonga’s main rugby stadium, in parallel with the 2019 Rugby World Cup. This proposal is currently under consideration, and some early planning has begun.

Pacific Assist and Turbo Touch Tonga (Andy Morgan-Tafea) are currently developing the plan for the continued development of the program in Tonga, and its launch in other South Pacific island nations. As part of the development, the following vision and objectives have been set:

- Program Vision: Self-reliance through healthy eating and active lifestyles



- Program Objectives:
  - Promote diabetes prevention through introducing Tongan school students to a fun, highly active sports game suitable for all ages, sizes, levels of ability, and fitness levels
  - Educate Tongan school students about diabetes prevention, healthy eating, and active lifestyles through a practical and engaging experiential education medium
  - Engage teachers and community leaders in the process of utilising Turbo Touch to educate Tongan students about diabetes prevention, healthy eating, and active lifestyles
  - Promote the LDS Charities Eat Healthy Be Active Pacific Diabetes Prevention Education Program within the broader school community including students, teachers, and parents

### *PNG Mum's Preschool*

In January 2019, using a modified version of the HIPPY program to meet local needs, senior missionaries Sister Lucy Hafoka (Mission President's wife) and Sister Carol McReynolds created a Mum's Pre-school program for groups of mothers in Port Moresby and other areas in Papua New Guinea. Students are aged four to eleven, and many have not started attending school because they lack the basic literacy and numeracy capacity and confidence. The groups meet at LDS Chapels or in their own homes three days a week for two hours. There is a total of 88 students and 14 mothers (not including numbers for Daru that are unknown). Table 1 shows the location and of the Mum's Preschools and how many there are in each location.

Table 1: Mum's Preschool Locations and How Many

Location	Number of Preschools
Port Moresby	4
Daru	2
Isumo	2

In addition to the preschools listed above, there are mums working with their children at home. However, due to distance, isolation, poor roads, bad weather, and no telecommunications it is very difficult for the sisters to get regular updates. Sister Hafoka tries to meet up with the mums when she visits the areas for district or zone conferences.

On meeting Sister Hafoka and Sister McReynolds during a visit to Port Moresby in March of 2019, Pacific Assist directors saw that these efforts fell within the vision of

inspiring self-reliance, and agreed that Pacific Assist would provide educational materials for the program. To date, Pacific Assist has contributed AU\$2,000 towards materials such as readers, alphabet cards, educational games, puzzles and posters, basic language cards, exercise books, crayons, pencils, sharpeners, paper, chalk, and CD players (or Bluetooth capacity), laminating pouches, and a laminator. The major goal of the Mum's Preschool's is to be able to help the children learn to read before they enter elementary school.

## **Financial Statements**

Furniture for Schools Ltd. (Trading as Pacific Assist) met all financial obligations for the 2018/2019 financial year. The company has no outstanding debts. Frontier Accounting has prepared a detailed financial report for the 18/19 financial year and this will be tabled at the 2019 Annual General Meeting.

Furniture for Schools Charitable Trust met all financial obligations for the 2018/2019 financial year. The trust has no outstanding debts. Associated Business Advisors has prepared a detailed performance report for the 18/19 financial year and this will be tabled at the 2019 Annual General Meeting.

## 2020 Strategic Plan and Goals

During the 2019 financial year, Pacific Assist sought to consolidate existing projects while seeking to expand its reach by adding new projects and building new partnerships. In 2020, Pacific Assist will work to build and strengthen all current projects and partnerships. In addition, we will continue to seek financial support for our projects through grant applications and seeking additional project partners.

In 2020, LDS Charities will remain our key strategic partner. Their locally based personnel, existing relationships with key local government and non-government organisations and other grass roots community leaders and organisations, and their financial resources make a significant contribution to the success of Pacific Assist projects. As has always been the case, in 2020 we will align our projects with LDS Charities strategic priorities and work in close partnership with them.

In addition to consolidating and strengthening the existing projects, Pacific Assist will seek to develop one additional project in 2020, the Port Moresby Model Schools Project. The object of this project is to inspire self-reliance through a holistic education approach with one school. The selected school then becomes a model for other schools to learn from. Pacific Assist proposes to work with an entire school community (principal, teachers, students, and parents) to design a strategic development plan that incorporates:

- School leadership improvement
- Student leadership improvement
- Staff and student psychological and physical well-being
- Lifting literacy and numeracy rates to United Nations benchmark standards
- Physical facilities improvements to a standard that promotes effective teaching and learning
- Community engagement

This approach is intended to achieve a targeted, significant impact as opposed to a more broadly spread smaller impact.

Pacific Assist's 2020 goals are as follows:

- Raise \$200,000 in addition to funding provided by LDS Charities
- Ship 60 containers of school furniture (New Zealand and Australia combined)
- Assist a minimum of 20 Vanuatu principals meet the Certificate/Diploma literacy and writing prerequisites
- Ship 4 containers of hospital equipment
- Establish the Turbo Touch Diabetes prevention program in 10 Tongan schools

- Conduct 4 Turbo Touch Diabetes Prevention Program tournaments in Tonga (1 per quarter)
- Establish two funding partnerships each for the Extra Mile Tongan HIPPY Project and the PNG Mum's Preschool Project
- Establish the parameters and funding partners necessary to launch the Port Moresby Model Schools project in the 2021 financial year

## **Acknowledgements**

During the 19/20 financial year Pacific Assist was able to make important contributions to many communities across the South Pacific. In addition, we have established relationships with significant South Pacific island, Australian, and New Zealand business, government, and community leaders. All of this would not have been possible without our partners and friends.

First and foremost, we would like to acknowledge our key strategic partner LDS Charities. Without their goodwill, wonderful humanitarian missionaries, and project sponsorship Pacific Assist could not have achieved all that it has.

We would also like to acknowledge and express gratitude to our other project partners without whom we could not achieve our goals. Specifically, we acknowledge and thank the Vanuatu Ministry of Education and Training, Huddle Learning Systems, Frontier Financial Group, Furnware, Castlemaine Health, Epworth Health Care, Extra Mile Foundation, Innova Group, Turbo Touch Tonga, Touch New Zealand, Schoolastic New Zealand, Precision Hytec, Compass Express, PDL, and PGL.

Also essential to our success are the many volunteers who have given of their time, effort, and talents to enable us to deliver our various programs. These volunteers include friends and family members, missionaries of The Church of Jesus Christ of Latter-day Saints, school principals, teachers, and students, and other members of the community.

We look forward to many more successes as we work together to inspire self-reliance among the peoples of the South Pacific.

## Appendix 1 – Grant Application Schedule

Furniture For Schools - \$8,500	Turbo Touch Diabetes Prevention Program - \$3,000			Vanuatu Principal Development & Mentor Program - \$20,000					
GRANT AVAILABLE	OPENING DATE	CLOSING DATE	APPLICATION DATE	AMOUNT AVAILABLE	AMOUNT SOUGHT	PROJECT INTEREST	NOTIFICATION DATE	OUTCOME	
Incentive Fund - Phase Four	Sep-19	Nov-19		Max \$60K AUD					
Direct Aid Program									
Pacific Development & Conservation Trust Grant			14-Aug-19	25-Sep-19		\$2K-\$50K NZD		27-Nov-19	
Regional Environment Office Grant - US/Fiji			2018-2019 closed. 2019-2020 not opened yet.			\$5K -- \$24999 USD			
Australian Communities Foundation			26-June-2019	\$2K-\$15K AUD Possibly + \$25K		Vanuatu Principal Development	15-Jul-19	Application Accepted	
	Ongoing. Two application requests per year.								
Good2Give	14-May-19	28-May-19	28-May-2019		\$20K	Vanuatu Principal Development	28-May-19	Approved & Posted	
BSP Vanuatu Women's Scholarship Grant									
Digicel Foundation									
AFL Vanuatu									
Westpac	Imelda Griffin:	Keen to talk regarding projects. Scheduling conference time with Rick McLean							
Vodafone									
Specsavers Community Program	Phoned & Emailed	Jared Roussety	Is checking with some people at Specsavers about how we can be added to their funding list						
Harcourts Foundation									
	Emailed Julia Eyles - possible funding for projects in Fiji. Referred to Emma in Fiji. Missed current round. Next opens immediately following.								
June Canavan Giving Project	Always open.	01-August-2019	03-July-2019	\$20K	PNG Principal Development & TT ist stage 17/7/2019				
	Will support PNG projects. (Specifically mentoring projects in Education) Can apply any time - 1/2 or 1/8 for March and September funding. Small grants from \$1K to 60K projects								
Minderoo Foundation	Emailed the Foundation. They will review and respond.								
National Institute of Health (Peter Harkness)	Have made contact with Peter Harkness. Waiting for response.								
Future2Foundation									
Philanthropy									
Clare Murphy Fund									
Assia Altman Fund									
Dubsky Family Fund									
Espero Fund									
Fairer Futures Fund									
Fiona Shields Fund									
James Family Fund									
Rana & Alan Fund									
Ridgeway Fund									
Williams Fund									
Dorrie Alcock Memorial Fund									
Comedy For a Cause	Emailed Mat Wakefield		Waiting for PA to advise of scheduled event date and location. C4aC ready and waiting to proceed.						
Australian Aid: Friendship Grant	16/07/2019	10/09/2019	\$30-60K						
Pacific Sports Partnership Program	Been superseded by the new Sports 2030 program that will be launched later in 2019. Forwarded synopsis docs to Clive.								
Global Innovation Fund	Always Open	Working through the application process now. Lengthy. Will submit first part of application which will then proceed with Richard with online conferences & interviews.							
Tucker Foundation Grant									

---

# Annual Report

Pacific Assist

1 August 2019

Prepared by Frontier Accounting Pty Ltd

---



# Contents

---

Compilation Report	3
Directors Declaration	4
Profit & Loss	5
Movements in Equity	6
Balance Sheet	7
Notes to the Financial Statements	8

---

# Compilation Report

---

## Pacific Assist For the year ended 30 June 2019

We have compiled the accompanying special purpose financial statements of Furniture for Schools, which comprise the balance sheet as at 30 June 2019, the profit and loss for the year then ended, a summary of significant accounting policies and other explanatory notes. The specific purpose for which the special purpose financial statements have been prepared is set out in Note 1.

### 1. Director's Responsibility

The directors of Furniture for Schools are solely responsible for the information contained in the special purpose financial statements and have determined that the significant accounting policies adopted as set out in Note 1 to the financial statements are appropriate to meet their needs and for the purpose that the financial statements were prepared.

### 2. Our Responsibility

On the basis of information provided by the directors of Furniture for Schools, we have compiled the accompanying special purpose financial statements in accordance with the significant accounting policies adopted as set out in Note 1 to the financial statements and APES 315: Compilation of Financial Information.

Our procedures use accounting expertise to collect, classify and summarise the financial information, which the directors provided, in compiling the financial statements. Our procedures do not include verification or validation procedures. No audit or review has been performed and accordingly no assurance is expressed.

The special purpose financial statements were compiled exclusively for the benefit of the directors of Furniture for Schools. We do not accept responsibility to any other person for the contents of the special purpose financial statements.

Frontier Accounting Pty Ltd.

PO Box 228 Collins St West, Vic 8007  
25 September 2018  
Signed

# Directors Declaration

---

## Pacific Assist For the year ended 30 June 2019

The directors have determined that the company is not a reporting entity and that this special purpose financial report should be prepared in accordance with the accounting policies outlined in Note 1 to the financial statements.

The directors of the company declare that:

1. the financial statements and notes, as set out herein present fairly the company's financial position as at 30 June 2019 and its performance for the year ended on that date in accordance with the accounting policies described in Note 1 to the financial statements; and
2. in the directors' opinion there are reasonable grounds to believe that the company will be able to pay its debts as and when they become due and payable.

This declaration is made in accordance with a resolution of the Board of Directors:

Director: Richard McLean

Dated this 01 day of August 2019

~~Director: Clive Haydon~~

~~Dated this \_\_\_\_\_ day of \_\_\_\_\_ 2019~~

Director: Rikki Tukukinó

Dated this 01 day of August 2019

# Profit & Loss

## Pacific Assist For the 12 months ended 30 June 2019

	Jun-19	Jun-18
<b>Income</b>		
Gross Receipts	162,139	77,779
Interest Income	13	5
<b>Total Income</b>	<b>162,152</b>	<b>77,785</b>
<b>Gross Profit</b>	<b>162,152</b>	<b>77,785</b>
<b>Less Operating Expenses</b>		
Advertising	46	-
Bank Fees	80	-
Donation	3,988	-
Filing Fees	475	82
Freight & Courier	128,014	48,208
Insurance	142	-
Motor Vehicle Expenses	532	-
Office Expenses	1,473	3,655
Printing & Stationery	285	-
Repairs & Maintenance	-	91
Subscriptions	65	-
Telephone & Internet	145	-
Training Expenses	3,902	8,448
Travel - International	11,741	10,998
Travel - National	5,932	1,339
Truck Hire Charges	1,548	-
<b>Total Operating Expenses</b>	<b>158,368</b>	<b>72,820</b>
<b>Net Profit</b>	<b>3,784</b>	<b>4,964</b>

### Notes

This statement is to be read in conjunction with the Notes to the Financial Statements and the accompanying Compilation Report.

# Movements in Equity

---

## Pacific Assist As at 30 June 2019

	30 Jun 2019	30 Jun 2018
<b>Equity</b>		
Opening Balance	8,313	3,349
Current Year Earnings	3,784	4,964
<b>Total Equity</b>	<b>12,097</b>	<b>8,313</b>

### Notes

This statement is to be read in conjunction with the Notes to the Financial Statements and the accompanying Compilation Report.

# Balance Sheet

## Pacific Assist As at 30 June 2019

30 Jun 2019      30 Jun 2018

### Assets

<b>Bank</b>		
Business Account	10,476	4,644
<b>Total Bank</b>	<b>10,476</b>	<b>4,644</b>
<b>Current Assets</b>		
BAS Receivable	3,621	3,669
<b>Total Current Assets</b>	<b>3,621</b>	<b>3,669</b>
<b>Total Assets</b>	<b>14,097</b>	<b>8,313</b>

### Liabilities

<b>Current Liabilities</b>		
Loan - Frontier Financial Group Pty Ltd	2,000	-
<b>Total Current Liabilities</b>	<b>2,000</b>	<b>-</b>
<b>Total Liabilities</b>	<b>2,000</b>	<b>-</b>
<b>Net Assets</b>	<b>12,097</b>	<b>8,313</b>

### Equity

Current Year Earnings	3,784	4,964
Retained Earnings	8,313	3,349
<b>Total Equity</b>	<b>12,097</b>	<b>8,313</b>

### Notes

Signed .....

This statement is to be read in conjunction with the Notes to the Financial Statements and the accompanying Compilation Report.



# Notes to the Financial Statements

---

## Pacific Assist For the year ended 30 June 2019

### 1. Statement of Significant Policies

The directors' have prepared the financial statements on the basis that the company is a non-reporting entity because there are no users dependent on general purpose financial reports. This financial report is therefore a special purpose financial report that has been prepared in order to meet the needs of members.

The financial report has been prepared in accordance with the significant accounting policies disclosed below which the directors have determined are appropriate to meet the needs of members. Such accounting policies are consistent with the previous period unless stated otherwise.

The financial statements have been prepared on an accruals basis and are based on historical costs unless otherwise stated in the notes. The accounting policies that have been adopted in the preparation of this report are as follows:

#### 1.(a) Income Tax

The income tax expense for the year comprises current income tax expense. The company does not apply deferred tax. Current income tax expense charged to the profit or loss is the tax payable on taxable income calculated using applicable income tax rates enacted, or substantially enacted, as at reporting date. Current tax liabilities are therefore measured at the amounts expected to be paid to the relevant taxation authority.

#### 1.(b) Inventories

Inventories are measured at the lower of cost and net realisable value. Costs are assigned on a first-in, first-out basis and include direct materials, direct labour and an appropriate proportion of variable and fixed overhead expenses.