



Pacific Assist

Inspiring Self-reliance

Pacific Assist Ltd.

Annual Report

01 July 2021 – 30 June 2022

Completed August 2022



ACFID
MEMBER



Contents

Vision	1
Mission	1
Overview	1
Core Principles of Self-reliance	1
Board of Directors	3
Members	5
Organisational Structure	6
Company Type.....	6
Leadership and Management	6
Charity Tax Concession Status.....	6
Deductible Gift Recipient (DGR) Status	6
Charitable Purposes	7
Chair’s Statement	7
Overview of Projects That Fulfilled Charitable Purposes	9
Furniture for Schools.....	9
PNG (Birdwing) Model Schools Project	10
PNG Mum’s Preschool	11
Pacific Assist Diabetes Prevention Program	14
Launching Leaders Project	16
Acahand Foundation Partnership	18
Review of 2022 Strategic Plan and Goals	19
Strategic Plan Evaluation	19
Financial Statements	22
2023 Strategic Plan and Goals	23
Pacific Assist’s 2023 Goals.....	23
Pacific Assist’s Five-Year Goals (2021 – 2025).....	24
Acknowledgements	25
Appendix 1 - Annual Financial Report	26

Vision

Inspiring Self-reliance

Mission

Our mission is to inspire individuals, families, and communities to be emotionally, physically, economically, and educationally self-reliant.

In addition to the mission statement, Pacific Assist is guided by its Core Principles of Self-reliance:

- Individual and collective self-determination
- Personal responsibility and integrity
- Community
- Development Mindset

Overview

Pacific Assist is a not-for-profit charity serving the nations of the South Pacific. Our mission is to inspire individuals, families, and communities to be emotionally, physically, economically, and educationally self-reliant. Pacific Assist identifies disadvantaged communities within the South Pacific and then seeks to assist those communities build their self-reliance capacity. An essential element of this effort is engaging the individuals, families, and communities receiving assistance in the process of identifying needs and determining and implementing solutions. Fostering self-reliance is at the heart of Pacific Assist's partnerships with South Pacific communities. Pacific Assist defines self-reliance as the capacity to envision a self-determined future and the freedom and capacity to access the necessary spiritual, mental, emotional, social and physical resources to enact that vision.

Core Principles of Self-reliance

Individual and collective self-determination – The right that individuals and communities have to freely act in accordance with their values and to be full participants in determining and implementing their own goals and strategies.

Personal responsibility and integrity – The obligation that everyone has to do all that they can to support themselves, to engage in the process of individual and

community development, and to act with honesty and in compliance with the laws and expectations of society.

Community – This principle encompasses the idea that true self-reliance includes connecting with and caring for others. It is expressed as a commitment to the common good, a sense of obligation to one’s neighbour, and respect for the rule of law. It acknowledges that no one individual, group, or organisation has all the necessary knowledge, skills, resources, networks and relationships to build a successful, self-reliant community. It invites collaboration, cooperation and mutual respect within and between organisations and within and between communities. Essential to applying this principle is the quality of empathy. Having empathy is acknowledging that all individuals and communities have a right to a voice and to be heard and understood. In practice, empathy is expressed by listening with a sincere desire to understand how life is experienced by another. It is the act of seeking to walk in someone else’s moccasins – seeking and listening to their insights, opinions, concerns, and feedback.

Development Mindset – A mindset that encompasses initiative, creativity, and innovation. This mindset is expressed through a willingness of individuals and communities to take charge of their destiny, engage in personal and collective life-long learning, and to imagine new possibilities, new solutions, new methods either through original invention or by modifying what already exists.

Board of Directors

Richard McLean – Director / Chair



Richard commenced working in the Financial Services sector in 1988. He is a certified financial planner, and founder and owner of Frontier Financial Group. Richard's passion is assisting others to achieve their goals and enjoy a quality life. He is married to Janelle, and they have five children. He is an avid follower of rugby, and enjoys running in his leisure time.

Riki Tukukino – Director / Deputy Chair



Riki is a Management Studies graduate. He has held various management positions with Mobil Oil Australia and FH Faulding, and has been the director of two companies operating in the pharmaceutical and food industries. He is currently a Self-Reliance Manager for the Pacific Area, Self-Reliance and Welfare Department of The Church of Jesus Christ of Latter-day Saints. Riki sees Pacific Assist as an opportunity to make a real difference in people's lives. Riki is married to Donna and they have three children. He loves rugby, and is an avid All Blacks supporter.

Callum Blair - Director



A former Senior Police Officer, and recipient of two prestigious policing commendations, Callum has been Owner and Director of Campus Security NZ Limited since 1998. He is a highly experienced security specialist, Relationship Manager, Contractors Representative, and Contract Manager with high-level skills in the implementation, training, and management of major security services contracts. Enhancing his professional background is Callum's experience in local politics. He has served on various boards and committees, including five terms as a City Councillor and chair of the Regulatory Committee for six years. Callum is married to Irene, and they have 3 daughters and 3 sons.

Clive Haydon – Secretary / Projects Manager



Clive has worked in a variety of roles managing outdoor education and other personal development programs for a variety of organisations, including charities supporting disadvantaged youth. He holds a Bachelor of Arts (Outdoor Education) and a Master of Science (Youth and Family Recreation). Assisting others to reach their highest potential has been his professional focus for over 25 years. Clive is married to Shari. They have four sons. He loves the outdoors, bushwalking, and canyoneering.

Members

Callum Blair

Robert Gordon

Clive Haydon

Shari Haydon

Janelle McLean

John Mclean

Richard McLean

Andy Morgan-Tafea

Donna Tukukino

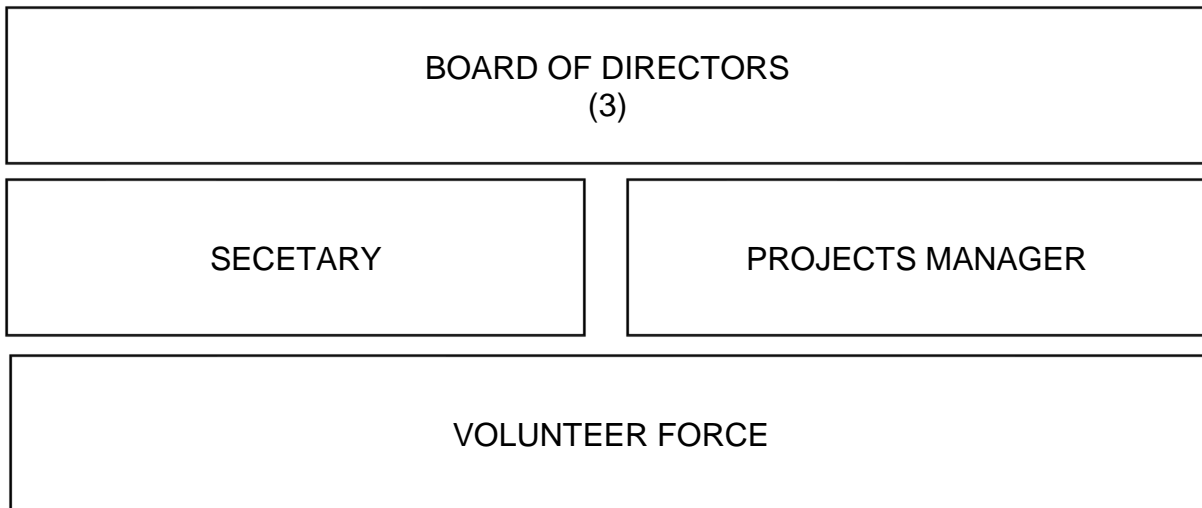
Riki Tukukino

Organisational Structure

Company Type

Australian Public Company (Registered Charity Limited by Guarantee)

Leadership & Management



Charity Tax Concession Status

Public Benevolent Institution endorsed to access the following tax concessions:

- GST Concession
- Income Tax Exemption
- FBT Exemption

Deductible Gift Recipient (DGR) Status

Endorsed as a Deductible Gift Recipient (DGR) from 06 Jun 2018

Charitable Purposes

The company's object is to pursue the following charitable purpose(s):

Assist disadvantage individuals, families, and communities in Australia, New Zealand, the islands of the South Pacific, and other nations in need to become emotionally, physically, economically, and educationally self-reliant by building partnerships and mobilizing expertise and resources that:

- Foster educational development
- Promote health & well-being
- Provide humanitarian aid
- Promote economic development

In seeking to fulfil these charitable purposes, Pacific Assist engages with governments, communities, and families. Pacific Assist believes the organisation is most effective when working in trusted partnerships to achieve common objectives. In addition, we believe results are improved when people freely give of their means, time, and talents with no other motivation than to bless the lives of others.

Chair's Statement

It was a challenging start to the 2022 year, with the region still amid a pandemic and all the associated consequences. Despite this, Pacific Assist continued to look for ways to inspire self-reliance among those we serve in the South Pacific.

With Melbourne being locked down from July until the end of October, and COVID-19 impacting international shipping schedules well into 2022, collecting and distributing school desks and chairs was hampered. Despite this, the Furniture for Schools Project successfully delivered desks, chairs, and other educational resources to schools across the South Pacific.

Both in Australia and New Zealand, in 2022 Pacific Assist sought to develop new partnerships and experiment with various education initiatives. In Australia, directors began dialogue with Launching Leaders and the Brumbies Rugby Union Club around the development of a leadership development program for Polynesian youth and young adults. In New Zealand, the team expanded their Pasifika Fit program within Auckland and introduced Exercise to Beat Diabetes to schools in Rarotonga. We also initiated a range of efforts to raise funds to support the PNG Mum's Pre-school Project.

In the age of information computer technology, improving learning and teaching capacity means developing ICT capacity. In this regard, Pacific Assist commenced a drive for refurbished iPads, laptops, and computers. We were able to deliver donated devices as part of our PNG Model Schools and Mum's Preschools Project. Further,

despite several COVID related challenges, Pacific Assist, Birdwing Independent School, Code Avengers, Flying Labs PNG, and Certiport worked together to prepare for the delivery of several digital literacy programs.

In any effort to build self-reliance, partnerships are crucial. During 2022 Pacific Assist engaged in significant dialogue with Acahand Foundation, a United States based NGO committed to building self-reliance in the South Pacific. Acahand Foundation recently established themselves in PNG as AcaPNG. Acahand and Pacific Assist share many common values and objectives and hope to work together on building education and employment opportunities for PNG young adults.

In all, 2022 was another year where Pacific Assist successfully contributed to building the self-reliance capacity of South Pacific individuals and communities.

Richard McLean
Chair

Overview of Projects That Fulfilled Charitable Purposes

In 2022, Pacific Assist's efforts to build the self-reliance capacities of individuals, families, and communities were targeted towards fostering educational development and promoting health and well-being. Following is an overview of each of the projects undertaken by Pacific Assist in 2022.

Furniture for Schools Project

In the South Pacific islands large numbers of students are sitting on the floor or have very poor-quality desks and chairs. Through the Furniture for Schools Project, Pacific Assist and Latter-day Saint Charities are assisting to alleviate this problem. The result is an enhanced learning environment, better educational outcomes, and an increase in students' self-reliance.

Schools in both Australia and New Zealand continue to seek out the opportunity to donate in-good-condition desks and chairs. Donations were sourced through:

- The Pacific Assist website donation form
- Schools calling Pacific Assist directly
- Referrals from new furniture suppliers
- Referrals from other schools
- Referrals from Campus Security
- Referrals from Frontier Financial Group's principal conferences
- Referrals from Frontier Financial Group's newsletter

In addition to donating desks and chairs, many schools (and other entities) also donated in good condition library books, computers, bookshelves, and stationary.

From July 2021 to June 2022 Furniture for Schools shipped a total of 23 (20 foot) containers to the South Pacific, broken down as follows:

- Total containers: 23 (20 foot)
- Total containers shipped from New Zealand: 17 (20 foot)
- Total containers shipped from Australia: 6 (40 foot x 3 = 20 foot x 6)
- Approximately 3,398 single desks, 3,180 chairs, approximately 8,000 thousand books, and 26 laptops
- Countries that received furniture and other education resource materials: Fiji, Papua New Guinea, Rarotonga, Samoa, Solomon Islands, and Tonga

Although the Furniture for Schools Project continues to be successful, there were two key challenges that impacted on the number of containers that were able to be sent during this financial year.

1. Both Melbourne and Papua New Guinea experienced prolonged COVID-19 lockdowns restricting Pacific Assist's ability to collect, ship, and distribute school furniture and other resources.
2. Due to global disruptions and restrictions resulting from the COVID-19 pandemic, shipping schedules were significantly reduced, and shipping costs significantly increased.

During this period, Pacific Assist and Latter-day Saint Charities undertook a comprehensive review of the project. The result was a reconfiguration of the project, with changes to be implemented in August of 2022. Key changes are:

- Budgets allocated on a country by country basis.
- A reduction in the involvement of Latter-day Saint Charities' Welfare Self-reliance country managers.
- Pacific Assist taking full responsibility for all project components including managing the relationship with ministries of education and overseeing distribution of furniture to ministry designated schools.

Despite the impacts of COVID-19, Pacific Assist remains fully committed to the Furniture for Schools Project, and it continues to deliver a tremendously valuable resource to schools in the South Pacific.

PNG (Birdwing) Model Schools Project

The major initiative of the Birdwing Model Schools Project for 2022 was preparing for the delivery of several digital literacy programs under the banner of the Birdwing ICT Project. However, progress was significantly hampered by the inability to ship the needed laptops. Further, lockdowns in Port Moresby and a significant health challenge for Birdwing's principal, Russell Jackson, also led to the project being paused. However, in May of 2022, the donated laptops arrived at the school, and Birdwing, Pacific Assist, Certiport, and Code Avengers recommenced preparations for delivering the programs. The first of these, a Code Avengers code camp for teachers facilitated by PNG Flying Labs, will commence during the first week of July 2022. This will be followed by a code camp for Birdwing grade five and six students, and a Certiport IC3 Digital Literacy Certification course for teachers.

As part of Birdwing Independent Schools existing partnership with Bavaroko Primary School, Russell reached out to the principal of Bavaroko, Catherine Moresi, and invited her to nominate 15 Bavaroko teachers who could participate with the Birdwing teachers in the Birdwing ICT Project. Catherine accepted the invitation.

Bavaroko Primary School is a department of education school consisting of approximately 1,000 students.

All participants will benefit from the project by:

- Receiving access to up to date ICT resources
- Receiving quality, current ICT tutoring
- Receiving the opportunity to receive internationally recognised ICT certification

An additional benefit is the opportunity to strengthen the relationship between Birdwing and Bavaroko Primary School. Bavaroko teachers who receive the ICT tutoring and certification at Birdwing will be able to utilise their new ICT knowledge and skills with their Bavaroko students. Thus, the reach of the project will be expanded. As the project expands, this process of recruiting participants through building on existing partnerships and contacts will continue.

The PNG (Birdwing) Model Schools Project will continue to be a major focus of Pacific Assist in 2023.

PNG Mum’s Preschools Project

The PNG Mum’s Pre-school program has been established for groups of mothers in Port Moresby, Lae, Madang, and surrounding areas in Papua New Guinea (PNG). Students are aged four to nine, and many have not started attending school because they lack basic literacy and numeracy capacity and confidence. The goal of the program is to prepare students to be school ready. The groups meet at Latter-day Saint chapels, in other simple community buildings, bush shelters, or in their own homes three days a week for two hours (some meet daily).

In 2022 over 1,000 students participated in over 40 Mum’s Pre-schools across Port Moresby, Lae, and Madang. This year, the number of students in the Port Moresby region grew by increased by 70% and in the Madang region by 34%. Unfortunately, numbers for Lae were not available. However, based on last year’s numbers and anecdotal reports, Lae student numbers are conservatively estimated to be over 400. Table 1 provides an overview of the numbers and locations of the pre-schools. Five of the schools have established local, volunteer boards.

Table 1: PNG Mum’s Preschool Locations and Student Numbers

Location/Name	Student Numbers
Port Moresby NCD	
• Konedobu (Saintarians)	44

Port Moresby NCD	
• 9 Mile (Sun Beam Pre-school)	78
• 9 Mile (Kukipi Mum's Preschool)	63
• Gerehu (River Preschool)	53
• Rainbow Heights (Liahona Pre-School)	28
• 2 Mile (Kourabada Harmony Preschool)	25
• Bomana (Bogama Mum's Preschool)	28
Central Province	
• Babaka (Babaka MP)	15
• Alewai Village (Alewai MP)	10
• Hula (Iruiru Pre-School)	6
• Kaiewagi Pre-School	8
• Babaka, Rigo (Konekalana MP)	13
• Hula (Kunirawa Pre-School)	26
• Ugamagi MP	15
• Kwikila (Saroa Keina MP)	9
• Sabusa (Kapes Literacy Centre)	50
• Kwakwailo (MP)	20
• Learn How to Learn MP	22
• Gaire (Horikoro Pre-school)	25
• Hula (Alewanama Pre-school)	28
• Gabagaba (Gabagaba MP)	26
• Babaka (Namona)	30
Gulf Province	
• Lavare, Iokea Village (Kohanga Preschool)	22
• Heatoare (Heatoare MP)	38
<i>Port Moresby and Surrounds sub-total</i>	<i>682</i>
Lae (Lae District)	
<i>Lae and Surrounds sub-total</i>	<i>Not available</i>
Madang	
• Maivson	66
• Aunty Hellen's	53
• Light of Hope	57

• Egena	20
• Wagug	15
• Uverin Soh	10
• Anawagon	10
• Gaibs	11
• Bahubo	20
• Biribiri	20
• Wara Tanget	20
• Egera	20
• Barum	20
<i>Madang and Surrounds sub-total</i>	
	342
Totals	1,024

In addition to the preschools listed above, there are other mothers working with their children at home in isolated areas. However, due to distance, isolation, poor roads, bad weather, and no telecommunications it is very difficult to get regular updates from these pre-schools.

In 2021, Pacific Assist and Latter-day Saint Charities in PNG agreed to partner together to continue supporting and strengthening the network of Mum's Pre-schools in PNG. The partnership has three main objectives:

- Identify sponsors for Mum's Pre-schools
- Secure learning materials and resources for Mum's Pre-schools
- Support selected Mum's Pre-school projects (e.g., building, technology, curriculum)

In 2022 Pacific Assist continued efforts to identify sponsors for Mum's Pre-schools and to raise funds for building materials for the Mavison-Madang Mum's Pre-school building project. This year, most of these efforts were directed towards establishing the means to raise funds in the United States and to transfer funds legally into Papua New Guinea. These efforts led to an in-principle agreement between Pacific Assist and Acahand Foundation, whereby funds raised for Mum's pre-schools will be able to be transferred and accessed through AcaPNG, a PNG legally registered entity of Acahand Foundation. The details of the process should be finalised in August of 2022.

In addition, a dedicated Mum's preschool sponsorship page has been created on the Pacific Assist website (see [PNG Mum's Preschool Sponsorship Form](#)¹), and a range of marketing materials have been created. Once the donations transfer process with AcaPNG is completed, these resources will be used to generate project sponsorships and donations.

An important Mum's Preschool initiative is the Maivson-Madang Mum's Preschool Building Project. The preschool's management committee (Au Heduru Association) continues to raise funds and is working to secure a state land lease. During the period, the association met their goal of raising a minimum of K6,000 (approximately AU\$800) for building materials. Pacific Assist is also continuing its efforts to identify sponsors for the project.

In September of 2022, the newly formed national Mum's Pre-school Association (PNG MPA) will be launched as part of the inaugural Mum's Preschool Conference. This will also coincide with the commencement of an IC3 Digital Literacy course being conducted for Mum's preschool principals with laptops donated by Pacific Assist.

Pacific Assist will continue its efforts to raise funds and seek in-kind donations to support the PNG Mum's Pre-schools.

Pacific Assist Diabetes Prevention Project

The Diabetes Prevention Project was established in July of 2020 as an expansion of the Exercise to Beat Diabetes project. During 2022, the project expanded to include a focus on personal and cultural values. The project has the following vision and objectives:

- Program Vision: Self-reliance through personal leadership, healthy eating, and active lifestyles
- Program Objectives:
 - Promote personal leadership and diabetes prevention through introducing school students to fun, highly active sports games suitable for all ages, sizes, levels of ability, and fitness levels
 - Educate school students about the importance of personal and cultural values as the foundation for personal leadership

¹ <https://www.pacificassist.org/education/png-mums-pre-school-sponsorship-form>

- Educate school students about diabetes prevention, healthy eating, and active lifestyles through practical and engaging experiential education mediums
- Engage teachers and community leaders in the process of utilising physical activities and sport to educate students about personal and cultural values, diabetes prevention, healthy eating, and active lifestyles
- Promote health and well-being principles and messages within the broader school community including students, teachers, and parents

In 2022, Pacific Assist undertook the following initiatives under the banner of the Pacific Assist Diabetes Prevention Project:

- **Pasifika Fit:** A partnership between Pacific Assist and Harbour Sport targeting disadvantaged Pasifika rangatahi (youth). Funding was provided by Harbour Sports and was increased to expand the program to four schools:
 - Westlake Girls High
 - Wairau Intermediate
 - Birkdale Intermediate
 - Northcote Intermediate

The program is delivered twice a week during lunch time at participating schools by Andy Morgan-Tafea and Nomi Tafea. A range of physical activities are utilised, including Turbo Touch, to promote diabetes prevention and general wellbeing. Specific areas of focus include personal leadership (incorporating personal and cultural values and goal setting), eating healthy, and being active. At Northcote Intermediate, participants are also involved in restoring an authentic outrigger canoe and undertaking a research project about its origins and use.

Principals and teachers at each of the participating schools are very pleased with the results and note the improvement in the wellbeing of participants. Observing a student's positive change, one teacher remarked that the student "started engaging more and more with the games and fitness sessions, she became more confident to share her thoughts and opinions and even began to take more opportunities to be a leader."

- **Rarotonga Eat Healthy Be Active:** Building on the good will and relationships achieved through the Turbo Touch - Exercise to Beat Diabetes Show-case conducted in Rarotonga in June 2021, Callum Blair has continued working towards introducing a permanent diabetes prevention program in Rarotonga. To this end, in May of 2022 he brought together a contingent of potential partners to develop a concept brief and assess interest in the initiative. Because of these efforts Callum, Pacific Assist Exercise to Beat Diabetes coordinators, Andy Morgan-Tafea and Pinomi Tafea, Community Connect General Manager, Sandy Hackett, Northcote Intermediate principal,

Phil Muir, and assistant principal, Joel King travelled to Rarotonga in late June to undertake a scoping exercise.

The scoping exercise was deemed a great success by all who attended, and the following outcomes were achieved:

- Pacific Assist and Community Connect will partner together to apply for funding to run an Eat Healthy Be Active program in South Auckland and Rarotonga based on the Pasifika Fit model.
- A meeting with the Rarotonga Minister of Education/Sport and the Secretary of Education leading to an in principal agreement to endorse Pacific Assist's/Community Connect's Eat Healthy Be Active funding application to the New Zealand Ministry of Foreign Affairs and Trade.
- Meeting with the Secretary of Justice to explore additional opportunities for utilising the Pacific Assist/Community Connect Eat Healthy Be Active Diabetes program.
- Identified and confirmed a piece of land for a 3 on 3 basketball court to be installed by Streetworx in conjunction with an Eat Healthy Be Active program
- Northcote Intermediate School will conduct a student study abroad program in Rarotonga later in 2022 that will include a focus on leadership, culture, and wellbeing. In connection with this, 30 students from Northcote Intermediate will:
 - Participate in leading Turbo Touch – Exercise to Beat Diabetes sessions for Rarotongian students.
 - Undertake a waka building and sailing project with a traditional waka “carver.”

Given the significant restriction on travel during 2022, these are excellent outcomes. It is hoped that over the coming 12 months, the Tonga Exercise to Beat Diabetes Project can be resumed, and that a similar project can be established in Samoa.

Launching Leaders Project

In 2022, Tony Abel, Brumbies Rugby Club Game Day and Operations Manager, approached Pacific Assist about the possibility of a partnership that would provide opportunities for:

1. The club to contribute to the broader Pacifica community.
2. Brumbies players to participate in community service.

Initial discussions between Pacific Assist directors, Tony Abel, and Liz Griffiths (Brumbies Partnership Manager), generated several potential partnership options:

- Conduct a Furniture for Schools project in Canberra, the home of the Brumbies, and invite Brumbies players to assist with loading the furniture.

- Connect Brumbies players with students at Birdwing Independent. Players could make online presentations to students on a range of personal development subjects (e.g., personal leadership, teambuilding, education, eat healthy-be active).
- Development of a leadership mentor program where Brumbies players undertake a leadership course (e.g. Launching Leaders) and then mentor Pasifika high school students who are struggling at school.
- Exercise to Beat Diabetes tournament for local school students in which players participate on/coach student teams.

Ultimately, in 2022, Brumbies players participated in a Furniture for Schools project in Canberra, and it was decided to continue the dialogue regarding the other projects. In connection with these discussions, Pacific Assist reached out to seek feedback and input from Launching Leaders founders Jim Ritchie and Laurence Day, and from Matthew Glen, a member of Pacific Assist’s cultural board of advice and a co-author on a recent paper on education pathways for Polynesians in Australia². Each was very supportive of the idea of utilising Launching Leaders with Brumbies players and with Pasifika youth and young adults. Laurence Day also introduced Pacific Assist to Launching Leaders administrative manager, Roselene Walker. Roselene provided an overview of the Launching Leaders course and provided access for Pacific Assist directors, the projects manager, and diabetes prevention coordinators to complete the course.

Launching Leaders content is focussed on identifying personal values, vision, goals and a life plan. The standard course runs over 12 days, covers 12 key principles, and is delivered via Zoom. Guest speakers and group discussions are included, with additional personal reflection and worksheet activities completed offline. However, the 12-week online Zoom format is only one way to deliver the content. If the content is based on the principles outlined by Launching Leaders, then the content can be delivered in ways that meet the needs and context of the learners. For Pacific Assist projects, this could include a 2-3-day workshop, guest speakers, high energy activities to highlight principles, personal reflection exercises, worksheets, group discussions, videos, etc.

Pacific Assist directors determined that Launching Leaders could be adapted and applied to a broad range of youth and young adult groups in the South Pacific, either as a component of existing projects or as a stand-alone project. Pacific Assist is currently considering how to utilise Launching Leaders in the PNG Model School Project, Eat Healthy – Be Active program, and the AcaPNG proposed young adult centre of excellence.

² Kearney, J., & Glen, M. (2017). The effects of citizenship and ethnicity on the education pathways of Pacific youth in Australia. *Education, citizenship and social justice*, 12(3), 277-289.

Acahand Foundation Partnership

In 2022, through our involvement in the PNG Mum's Preschool Project, Pacific Assist was introduced to the Acahand Foundation. Acahand Foundation was established by Scott Moscrip, founder of truckstop.com and a member of the BYU Marriott School of Business, Entrepreneurship Founders Advisory Board, and National Advisory Council. AcaHand Foundation are committed to building self-reliance in developing countries, including Papua New Guinea and Fiji. Key areas of focus include health and wellbeing, education, and positive community change.

After initial communications with Acahand Foundation's company officer, Steve Harris, all agreed that Pacific Assist and Acahand Foundation share common values and goals. There was a consensus to move forward and identify common projects to collaborate on. These included:

- PNG Mum's Preschools
- YSA Centre of Excellence (a proposed education/enterprise hub)
- Community level education projects

An important first outcome of Pacific Assist's collaboration with Acahand Foundation is an agreement where Acahand Foundation will receive funds donated for the Maivson-Madang Mum's Preschool Building Project (MMBP) by individuals and entities in the United States. They will also make those funds available to be utilised for the project in Papua New Guinea by way of a grant to AcaPNG Foundation Inc. Additionally, any funds donated directly to AcaPNG specifically for the MMBP from Pacific Assist or other charities/ donors in Papua New Guinea and the South Pacific countries of Australia and New Zealand will also be available to grant from AcaPNG in support of the MMBP.

Pacific Assist looks forward to its unfolding collaboration with Acahand Foundation.

Review of 2022 Strategic Plan and Goals

For the 2022 financial year, Pacific Assist identified that it would pursue the following strategic plan:

- Strengthen and build our key education and health and wellbeing projects:
 - Furniture for Schools
 - PNG Model Schools Project
 - PNG Mum's Pre-school
 - Diabetes Prevention Project
- Continue with Latter-day Saint Charities as a key strategic partner
- Broaden our partnership and funding base by extending our network of relationships with likeminded NGOs, corporates, government departments, and other organisations and individuals working in the development sector

Strategic Plan Evaluation

Overall Pacific Assist made good progress towards implementing the key elements of the strategic plan and achieving its specific goals. The outcome of efforts to achieve the plan can be summarised as follows:

- i. Focus continued on the key education and health and wellbeing projects identified in the strategic plan. Furniture for Schools and the Diabetes Prevention Project were operational, and Pacific Assist made progress towards achieving the goals outlined for the PNG Model Schools and PNG Mum's Pre-school Projects.
- ii. Latter-day Saint Charities continued to be a key strategic partner. Throughout 2022, Pacific Assist and Latter-day Saint Charities partnered together on three projects:
 - Furniture for Schools
 - PNG Mum's Pre-school
 - PNG Model Schools
- iii. In the effort to broaden our partnership base and build a network of relationships with other likeminded individuals and organisations, Pacific Assist directors established relationships with the following individuals and organisations:
 - Tony Abel, game day and operations manager, Brumbies Rugby Club

- Liz Griffiths, partnership manager, Brumbies Rugby Club
- Roselene Walker, administrative manager, Launching Leaders
- Steve Harris, company officer, Acahand Foundation
- Joel King, assistant principal, Northcote Intermediate School, Auckland New Zealand
- Westlake Girls High, Auckland New Zealand
- Wairau Intermediate, Auckland New Zealand
- Birkdale Intermediate, Auckland New Zealand
- Jonathan Warwick, area director of Pacific church schools, The Church of Jesus Christ of Latter-day Saints
- Piltz Napa, political candidate and former Latter-day Saint district president in Rarotonga
- Mike Tavioni, traditional vaka carver, Rarotonga
- Kevin Soli, coordinator, PNG Flying Labs, Port Moresby
- Catherine Moresi, principal of Bavaro, Primary School, Port Moresby, PNG
- Alex Thorsen, company officer, Alegra Learning

All the above provided valuable insights, information, and contacts. In addition, several of them are contributing ongoing support to and/or partnering on Pacific Assist or joint projects.

- iv. In 2022, Pacific Assist set nine goals as specific targets for achieving the strategic plan. The goals and the results are as follows:

2022 Goals	2022 Results
Ship 20 (20-foot) containers of school furniture (New Zealand and Australia combined)	16
Implement the Birdwing Independent teachers' digital literacy pilot program	In progress
Implement the Birdwing teachers' Code Avengers, Code Camp pilot program	In progress
Establish the International Learning Collaboration Project between Birdwing Independent and Northcote Intermediate School	On hold
Continue the creation of a community created innovative education model for Birdwing Independent School	In progress
Expand the PNG Model Schools Project to Jubilee Secondary College in Port Moresby	Not commenced

Identify 10 new sponsors for the PNG Mum's Pre-school Project	In progress
Run six Exercise to Beat Diabetes programs as follows: <ul style="list-style-type: none"> • Auckland x 2 • Rarotonga x 2 • PNG x 2 	Auckland x 4 Rarotonga x 2 PNG x 0
Increase Pacific Assist's relationship/partnerships network from 36 to 50 individuals/organisations	50

- v. In 2021, Pacific Assist set six five-year goals. The goals and the results are as follows:

2021-2025 Goals	2022 Results
Raise \$200,000 in addition to funding provided by Latter-day Saint Charities	\$0.00
In connection with the PNG Model Schools Program, establish five "Enterprise Hubs" in Port Moresby	1 at context analysis stage
Establish the Models Schools Project in Vanuatu based on the PNG model (this would incorporate the principal mentor program)	Not commenced
Establish the Turbo Touch Diabetes prevention program in 10 Tongan schools	Not commenced
Establish the Turbo Touch Diabetes prevention program in 5 Samoan schools	Not commenced
Establish two funding partnerships for the PNG Mum's Preschool Project	2

Financial Statements

Pacific Assist Ltd met all financial obligations for the 2021/2022 financial year. The company has no outstanding debts. Frontier Accounting has prepared a detailed financial report for the 21/22 financial year and this will be tabled at the 2022 Annual General Meeting (see Appendix 1 - Annual Financial Report).

Furniture for Schools Charitable Trust met all financial obligations for the 2021/2022 financial year. The trust has no outstanding debts. Associated Business Advisors has prepared a detailed performance report for the 21/22 financial year and this will be tabled at the 2022 Annual General Meeting.

2023 Strategic Plan and Goals

In line with our overall vision of inspiring self-reliance, during the 2023 financial year, Pacific Assist will focus its efforts on strengthening and building our key education and health and wellbeing projects:

- Furniture for Schools
- PNG Model Schools Project
- PNG Mum's Pre-school
- Diabetes Prevention Project

Each of these projects focusses on empowering individuals and communities to be self-determined, exercise personal and collective responsibility and integrity, strengthen their sense of community, and build a development mindset. An essential element of this effort is engaging the individuals, families, and communities receiving assistance in the process of identifying needs and determining and implementing solutions.

In 2023, Latter-day Saint Charities will continue as a key strategic partner. Their locally based personnel, existing relationships with key local government and non-government organisations and other grass roots community leaders and organisations, and their financial resources make an important contribution to the success of Pacific Assist projects.

Further, to strengthen our capacity to achieve our goals, Pacific Assist will continue working to broaden our partnership and funding base by extending our network of relationships with likeminded NGOs, corporates, government departments, and other organisations and individuals working in the development sector.

Pacific Assist's 2023 Goals

- Ship 30 (20-foot) containers of school furniture (New Zealand and Australia combined)
- Implement the Birdwing Independent teachers' digital literacy pilot program
- Implement the Birdwing teachers' Code Avengers, Code Camp pilot program
- Continue the creation of a community created innovative education model for Birdwing Independent School
- Identify 10 new sponsors for the PNG Mum's Pre-school Project
- Run 12 Exercise to Beat Diabetes programs as follows:
 - Auckland x 4
 - Rarotonga x 2

- Tonga x 2
 - Samoa x 2
 - PNG x 2
- Increase Pacific Assist’s relationship/partnerships network from 50 to 60 individuals/organisations
 - Complete a development plan for an enterprise hub in Port Moresby

Pacific Assist’s Five-Year Goals (2021 – 2025)

- Raise \$200,000 in addition to funding provided by Latter-day Saint Charities
- In connection with the PNG Model Schools Program, establish five “Enterprise Hubs” in Port Moresby
- Establish the Models Schools Project in Vanuatu based on the PNG model (this would incorporate the principal mentor program)
- Establish the Turbo Touch Diabetes prevention program in 10 Tongan schools
- Establish the Turbo Touch Diabetes prevention program in 5 Samoan schools
- Establish two funding partnerships for the PNG Mum’s Preschool Project

Acknowledgements

During the 21/22 financial year Pacific Assist was able to make important contributions to many communities across the South Pacific. In addition, we have established relationships with South Pacific island, Australian, and New Zealand business and community leaders. All of this would not have been possible without our partners and friends.

First and foremost, we would like to acknowledge our key strategic partner Latter-day Saint Charities. Without their goodwill, country managers, humanitarian missionaries, and project sponsorship Pacific Assist could not have achieved all that it has.

We would also like to acknowledge and express gratitude to our other project partners and friends without whom we could not achieve our goals. Specifically, we acknowledge and thank Acahand Foundation, ACFID, AWH, Birdwing Independent School, Birkdale Intermediate, Blue Planet Logistics, Brumbies Rugby Club, Campus Security Tonga, Certiport, Code Avengers, Frontier Financial Group, Furnware, KiwiSport/Tū Manawa – New Zealand, Launching Leaders Worldwide Inc., Northcote Intermediate School, PNG Flying Labs, Scholastic New Zealand, Streetworx, Touch New Zealand, Transam Logistics, Turbo Touch Tonga, Victorian Department of Education and Training, Variety - the Children's Charity, New Zealand, Wairau Intermediate, and Westlake Girls High.

We would also like to very gratefully acknowledge the individuals who have made financial and in-kind donations – their quiet contributions have made a great difference.

Also essential to our success, are the many volunteers who have given of their time, effort, and talents to enable us to deliver our various programs. These volunteers include friends and family members, missionaries of The Church of Jesus Christ of Latter-day Saints, school principals, teachers, students, and other members of the community.

We look forward to many more successes, as we work together to inspire self-reliance among the peoples of the South Pacific.

Appendix 1 - Annual Financial Report

Annual Report

Pacific Assist

30 June 2022

Prepared by Frontier Accounting Pty Ltd

Contents

Compilation Report	3
Directors Declaration	4
Profit and Loss	5
Movements in Equity	6
Balance Sheet	7
Notes to the Financial Statements	8

Pacific Assist For the year ended 30 June 2022

We have compiled the accompanying special purpose financial statements of Pacific Assist, which comprise the balance sheet as at 30 June 2022, the profit and loss for the year then ended, a summary of significant accounting policies and other explanatory notes. The specific purpose for which the special purpose financial statements have been prepared is set out in Note 1.

1. Director's Responsibility

The directors of Pacific Assist are solely responsible for the information contained in the special purpose financial statements and have determined that the significant accounting policies adopted as set out in Note 1 to the financial statements are appropriate to meet their needs and for the purpose that the financial statements were prepared.

2. Our Responsibility

On the basis of information provided by the directors of Pacific Assist, we have compiled the accompanying special purpose financial statements in accordance with the significant accounting policies adopted as set out in Note 1 to the financial statements and APES 315: Compilation of Financial Information.

Our procedures use accounting expertise to collect, classify and summarise the financial information, which the directors provided, in compiling the financial statements. Our procedures do not include verification or validation procedures. No audit or review has been performed and accordingly no assurance is expressed.

The special purpose financial statements were compiled exclusively for the benefit of the directors of Pacific Assist. We do not accept responsibility to any other person for the contents of the special purpose financial statements.

Frontier Accounting Pty Ltd

PO Box 397, Inverloch VIC 3996

1 September 2022

Signed

Pacific Assist For the year ended 30 June 2022

The directors have determined that the company is not a reporting entity and that this special purpose financial report should be prepared in accordance with the accounting policies outlined in Note 1 to the financial statements.

The directors of the company declare that:

1. the financial statements and notes, as set out herein present fairly the company's financial position as at 30 June 2022 and its performance for the year ended on that date in accordance with the accounting policies described in Note 1 to the financial statements; and
2. in the directors' opinion there are reasonable grounds to believe that the company will be able to pay its debts as and when they become due and payable.

This declaration is made in accordance with a resolution of the Board of Directors:

Director: Rikki Tukukino

Dated this 1st day of September 2022

Director: Richard McLean

Dated this 1st day of September 2022

Pacific Assist For the 12 months ended 30 June 2022

	Jun-22	Jun-21
Income		
Donation Received	360	5,043
Gross Receipts	53,294	53,104
Interest Income	-	6
Total Income	53,655	58,153
Gross Profit	53,655	58,153
Less Operating Expenses		
Administration Expenses	-	1,960
Bank Fees	-	257
Consulting & Accounting	2,000	-
Filing Fees	88	454
Food/Drinks Expenses	235	468
Freight & Courier	47,550	48,614
Fuel & Oil	144	-
Insurance	1,893	1,893
Membership	1,803	-
Motor Vehicle Expenses	63	14
Office Expenses	85	1,309
Subscriptions	252	254
Telephone & Internet	187	230
Travel - National	125	374
Website Expenses	764	764
Total Operating Expenses	55,189	56,593
Net Profit	(1,534)	1,560

Notes

This statement is to be read in conjunction with the Notes to the Financial Statements and the accompanying Compilation Report.

Pacific Assist As at 30 June 2022

	30 Jun 2022	30 Jun 2021
Equity		
Opening Balance	10,689	9,129
Current Year Earnings	(1,534)	1,560
Total Equity	9,154	10,689

Notes

This statement is to be read in conjunction with the Notes to the Financial Statements and the accompanying Compilation Report.

Pacific Assist As at 30 June 2022

30 Jun 2022

30 Jun 2021

Assets

Bank		
Business Account	5,417	17,818
Community Solutions Cash Res	3,252	-
Total Bank	8,669	17,818
Total Assets	8,669	17,818

Liabilities

Current Liabilities		
Furniture For Schools Ltd - Credit Card	-	481
GST	(485)	6,648
Total Current Liabilities	(485)	7,129
Total Liabilities	(485)	7,129
Net Assets	9,154	10,689

Equity

Current Year Earnings	(1,534)	1,560
Retained Earnings	10,689	9,129
Total Equity	9,154	10,689

Notes

Signed

This statement is to be read in conjunction with the Notes to the Financial Statements and the accompanying Compilation Report.

Riki Tukukino

Director: Rikki Tukukino
Dated this 1st day of September 2022



Director: Richard McLean
Dated this 1st day of September 2022

Notes to the Financial Statements

Pacific Assist For the year ended 30 June 2022

1. Statement of Significant Policies

The directors' have prepared the financial statements on the basis that the company is a non-reporting entity because there are no users dependent on general purpose financial reports. This financial report is therefore a special purpose financial report that has been prepared in order to meet the needs of members.

The financial report has been prepared in accordance with the significant accounting policies disclosed below which the directors have determined are appropriate to meet the needs of members. Such accounting policies are consistent with the previous period unless stated otherwise.

The financial statements have been prepared on an accruals basis and are based on historical costs unless otherwise stated in the notes. The accounting policies that have been adopted in the preparation of this report are as follows:

1.(a) Provisions

Provisions are recognised when the company has a legal or constructive obligation, as a result of past events, for which it is probable that an outflow of economic benefits will result and that outflow can be reliably measured.

Provisions recognised represent the best estimate of the amounts required to settle the obligation at reporting date.

1.(b) Cash and Cash Equivalents

Cash and cash equivalents includes cash on hand, deposits held at call with banks, other short-term highly liquid investments with original maturities of three months or less, and bank overdrafts.

1.(c) Revenue and Other Income

Revenue is measured at the value of the consideration received or receivable after taking into account any trade discounts and volume rebates allowed. For this purpose, deferred consideration is not discounted to present values when recognising revenue.

Interest revenue is recognised using the effective interest rate method, which, for floating rate financial assets, is the rate inherent in the instrument. Dividend revenue is recognised when the right to receive a dividend has been established.

Revenue recognition relating to the provision of services is determined with reference to the stage of completion of the transaction at reporting date and where outcome of the contract can be estimated reliably. Stage of completion is determined with reference to the services performed to date as a percentage of total anticipated services to be performed. Where the outcome cannot be estimated reliably, revenue is recognised only to the extent that related expenditure is recoverable.

All revenue is stated net of the amount of goods and services tax (GST).

1.(d) Goods and Services Tax

Revenues, expenses and assets are recognised net of the amount of GST, except where the amount of GST incurred is not recoverable from the Tax Office. In these circumstances the GST is recognised as part of the cost of acquisition of the asset or as part of an item of the expense. Receivables and payables in the balance sheet are shown inclusive of GST.

2. Code compliant financial statements

The financial statements have been prepared in accordance with the requirements set out in the ACFID Code of Conduct. For further information on the Code please refer to the ACFID website www.acfid.asn.au

Income Statement of Pacific Assist Ltd
For Year Ended 2022

	2022	2021
Revenue		
Donations and gifts		
Monetary	\$360.00	\$5,043.00
Non-monetary		
Grants		
Commercial Activities Income		
Other Income	\$53,295.00	\$53,110.00
Total Revenue	<u>\$53,655.00</u>	<u>\$58,153.00</u>
Expenditure		
International Programs	\$49,708.00	\$51,681.00
Community Education		
Fundraising Costs		
Accountability and Administration	\$5,481.50	\$4,910.00
Commercial Activities Expenditure		
Non-monetary expenditure		
Other expenditure		
Total Expenditure	<u>\$55,189.50</u>	<u>\$56,591.00</u>
Excess/(Shortfall) of Revenue Over Expenditure	<u><u>-\$1,534.50</u></u>	<u><u>\$1,562.00</u></u>

Financial declaration for Responsible Person

per section 60.15 of the Australian Charities and Not-for-profits Commission Regulation 2013

The Responsible Persons declare that in the Responsible Persons' opinion:

- (a) there are reasonable grounds to believe that the registered entity is able to pay all of its debts, as and when they become due and payable; and
- (b) the financial statements and notes satisfy the requirements of the *Australian Charities and Not-for-profits Commission Act 2012*.

Richard McLean¹
Directors' declaration



Dated this 02 day of September 2022

¹ The term 'Responsible Person' could be replaced with director(s) of the company or trustee(s) of the trust or if the trustee is a body corporate, a director(s) of the trustee.

